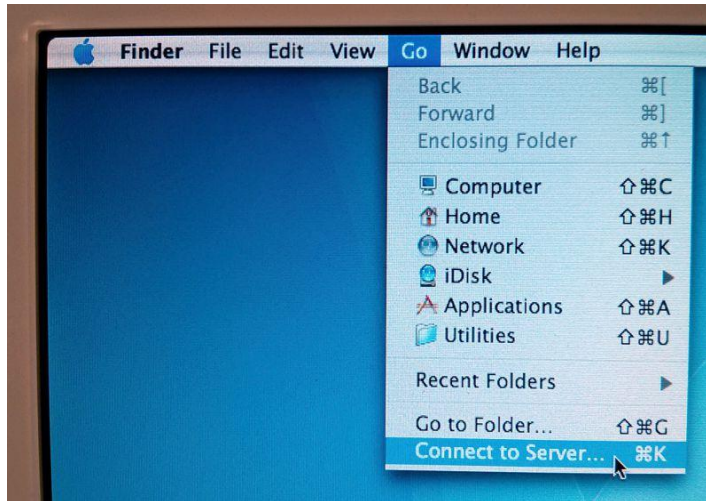


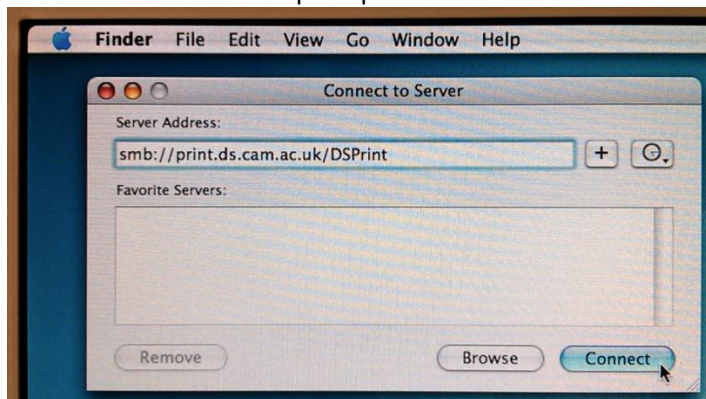
MAC PaperCut installation

To install PaperCut client on your own Mac computer please follow the steps below;

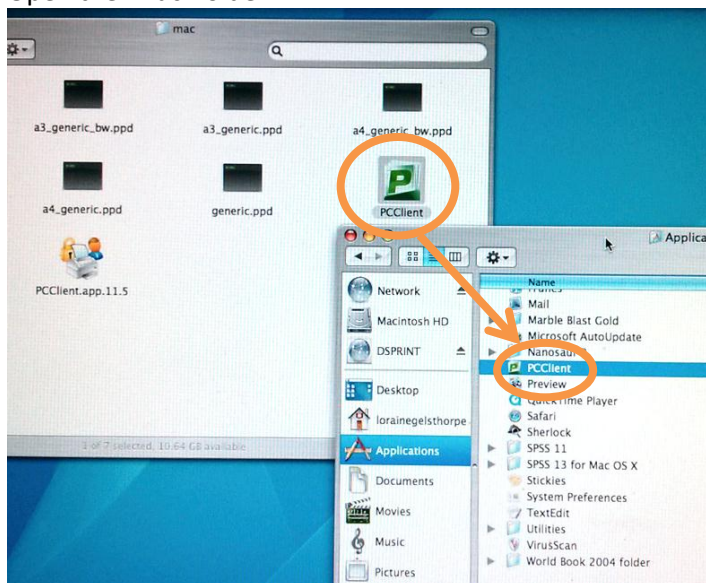
1. In Finder choose Connect to Server from the Go menu



2. In the server address box type (or copy from this page) :
smb://print.ds.cam.ac.uk/DSPrint
Connect as **Guest** when prompted

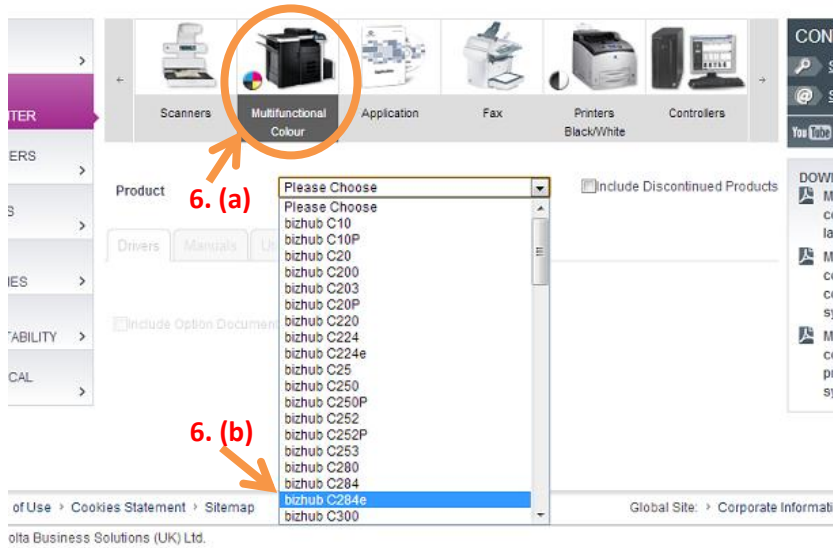


3. Open the 'mac' folder



4. Copy the PaperCut client (green 'P') to your Applications directory and then run it. If prompted, install the Java Runtime following the instructions on screen, then open PCClient.app again.

- Go to the Konica Minolta download page (<http://www.konicaminolta.co.uk/business-solutions/support/download-center.html>)
- Select Multifunctional Colour from the product type bar(a), then Select bizhub C284e from the product drop down list(b)



- Select your operating system (this can be found by pressing the apple and selecting 'About this mac')
- Download the latest drivers by pressing the Download icon (usually of top link)

7.

8.

Title	Type of Driver	Applicable for	Version	Release Date	Download	More Information
PostScript driver (2.0.8 MU) for KONICA MINOLTA bizhub C364e Series	Printer Driver	bizhub C284e, bizhub C224, bizhub C364, bizhub C284, bizhub C364e, bizhub C224e	2.0.8	2013-03-15	Download	More Information
PostScript driver (1.3.1 MU) for KONICA MINOLTA bizhub C364 Series	Printer Driver	bizhub C364, bizhub C284, bizhub C224	1.3.1	2012-09-25	Download	More Information

9. Select 'I accept the licence agreement', and then download the .dmg package.

bizhub C284
Title PostScript driver (2.0.8 MU) for KONICA MINOLTA bizhub C364e Series
Type of Driver Printer Driver
Applicable for bizhub C284e, bizhub C224, bizhub C364, bizhub C284, bizhub C364e, bizhub C224e
Operating Systems Macintosh OS X 10.8
Emulation PostScript
Languages Spanish, Italian, French, German, English
Version 2.0.8
Release Date 2013-03-15
Information This is the PostScript driver for KONICA MINOLTA bizhub C364e Series.
ID DLEU1304498EN00
License agreement

I do not accept the license agreement
 I accept the license agreement

Files:
BHC364ePSMacOS108_208MU.dmg (19706 Kbytes)

New Search

10. Run the 'BHC364ePSMacOS108_208MU.dmg' – actual file name may vary.

bizhub_C364e_103104

10. bizhub_C364_103104.pkg

11. If a warning dialogue asking if you are sure you want to run the application – press **Continue**

USER LICENSE AGREEMENT

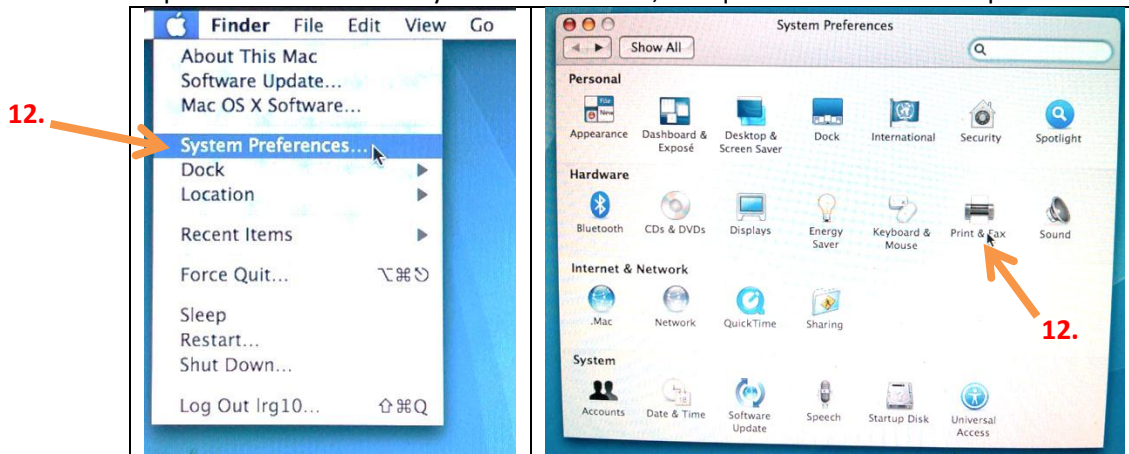
Downloads

CA NG,
OR TE
ALI
BEI STA
SC
mea m i
n c s
i- outl

! "BHC364ePSMacOS103_208MU.dmg" contains an application.
Are you sure you want to continue downloading "BHC364ePSMacOS103_208MU.dmg"?

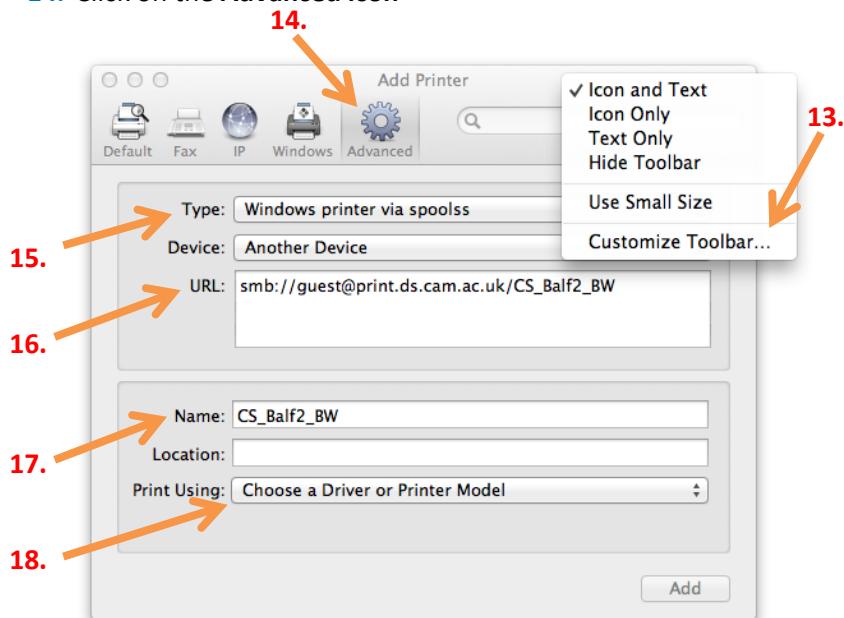
11. Continue

12. Open Print & Fax from System Preferences, if required click the locked padlock and authenticate.



13. Click '+' to add a printer. If the Advanced tab is not shown in the toolbar then right click in the toolbar, choose Customise toolbar and drag the Advanced icon into the toolbar.

14. Click on the **Advanced icon**



15. Set the type drop down to Windows printer via spoolers

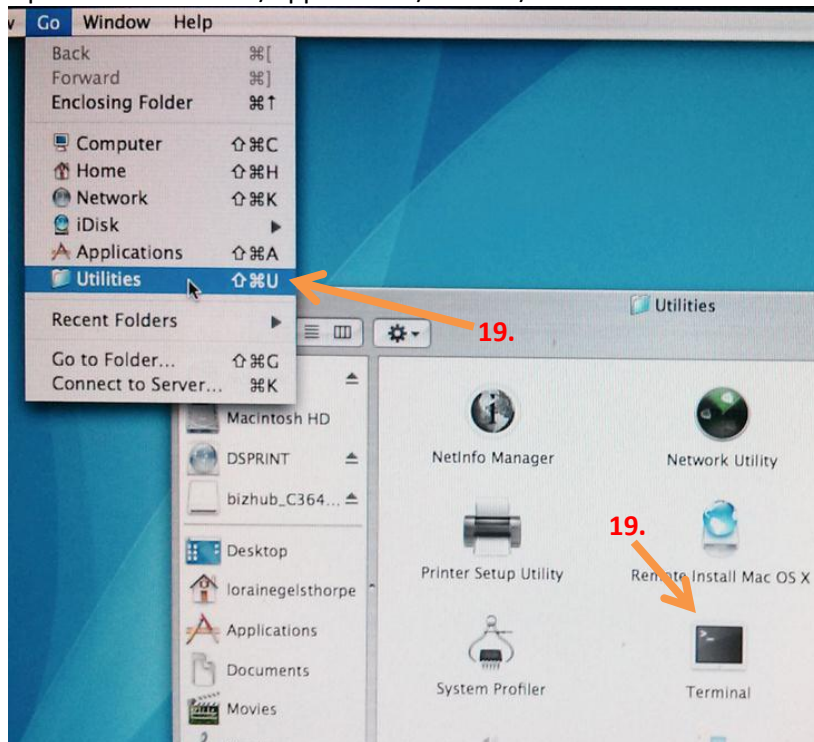
16. Set the URL to:

smb://guest@print.ds.cam.ac.uk/Criminology_FindMe

17. Set Name to the queue name of the printer to something you will remember (e.g Crim)

18. Click the **Print Using** drop down, go to Choose Software, search for Konica and pick bizhub284 driver.

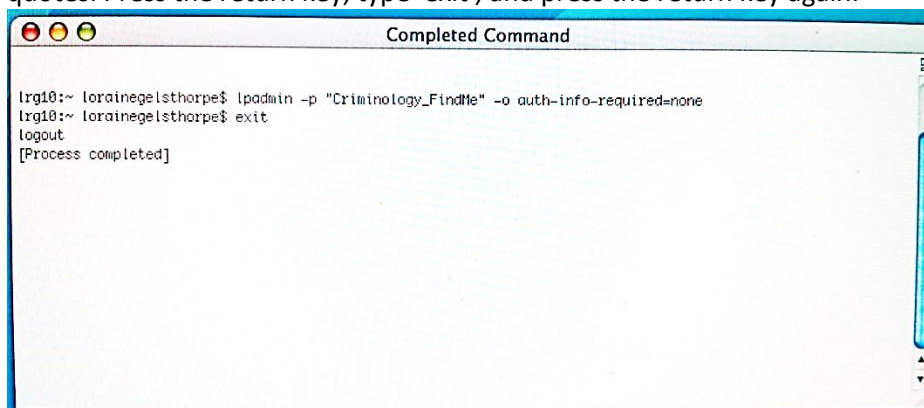
19. Open **Terminal** from /Applications/Utilities/



20. Type the following:

`lpadmin -p "Criminology_FindMe" -o auth-info-required=none`

The printer name should be the same as entered in step 16 above and enclosed in double quotes. Press the return key, type 'exit', and press the return key again.



21. You can now delete the print driver .dmg you downloaded earlier.

22. Open the PCClient from your application window –

THIS APP MUST BE RUNNING ANY TIME YOU WISH TO PRINT



23. Open the document you wish to print.
24. When you press print, make sure that the **"Criminology_FindMe"** printer is selected. When you press print, you'll be prompted for your Crisid and DS password.

The image shows a Mac OS 'Login' dialog box. The window title is 'Login'. It contains a printer icon, the text 'Login', and 'Print balances'. Below this is the message 'Your login credentials are required for printer access.' There are three input fields: 'Username:', 'Password:', and 'Remember:'. The 'Remember:' field is a dropdown menu currently showing 'Until I logout'. Two red arrows point to the 'Username:' and 'Password:' fields, labeled '24.'. A red arrow points to the 'Remember:' dropdown, labeled '25.'. At the bottom right are 'Cancel' and 'OK' buttons.

25. Select "Always" in the Remember drop down box to avoid entering your credentials again. If you share your computer with others we recommend leaving it as "Until I logout".