

# 7<sup>th</sup> International Conference on Evidence Based Policing

Chief Superintendent  
Jonathan Roy



fighting crime  
protecting communities

“A protocol and Phase-1 test of the impact on repeat domestic abuse callouts of a focused deterrence strategy targeting prolific domestic abuse offenders.”



fighting crime  
protecting communities

**7% of women & 5% men experienced domestic abuse in the last year**

**1 in 4 women and 1 in 6 men will experience domestic abuse in their lives**

**76% of all incidents are repeat**

**In a study of 268 serious case reviews, 34% of cases were found to have domestic abuse as a risk**

**Girls aged between 16 and 19 are at the highest risk of sexual assault (7.9 per cent), stalking (8.5 per cent) and domestic abuse (12.7 per cent)**

**Women experience an average of 35 incidents of domestic violence before reporting an incident to the police**



**Domestic abuse accounts for 18% of all violent crime**

**80% of trans people experience domestic abuse**

**Domestic abuse costs UK Businesses £1.9b a year**

**2 women a week and 1 man every 17 days die at the hands of a current / ex partner**

**75% of victims are targeted at work**

**19% of women have experienced stalking since the age of 16**

**70% of domestic incidents result in injury**

**70% of children on "At Risk" registers are from homes where domestic abuse occurs.**

**The total cost of domestic abuse to services (the criminal justice system, health, social services, housing and civil legal) amounts to £3.8 billion per year**

**12% of under 11s, 18% of 11-17s and 24% of 18-24s had been exposed to domestic abuse between adults in their homes during childhood.**

# A New Approach - Why?

- PCC & HMIC
- DA accounts for 5.3% of 'all recorded crime', 19% of all serious assaults, 30% of assault with injury, 57% of all harassment
- 4.95% of all incidents (84, 416) of which 14,807 are DV
- 2002 active MARAC cases – 49% high risk
- 4500 crimes, 3500 perpetrators but..... 'top 200' are responsible for 12% of crimes & 9% of incidents
- 240 perpetrators in the 2 groups
- Need for a systematic approach to the 'power few'



fighting crime  
protecting communities

# The Concept

- Deterrence Theory
- Focussed deterrence - ‘Pulling Levers’ (Kennedy, 1994)
- Killingbeck, 1994
- Little other identified & evaluated UK good practice – ‘too hard to do...’
- “High Point” Model



fighting crime  
protecting communities

# The Plan

- Build/ free capacity through continuous improvement
- Develop capability (police & partners)
- Develop connectivity – realigned partnerships through SDVG
- Ensure a consistent pan-Merseyside approach
- Full and meaningful contribution across CJ partners, 3<sup>rd</sup> sector and other agencies



fighting crime  
protecting communities

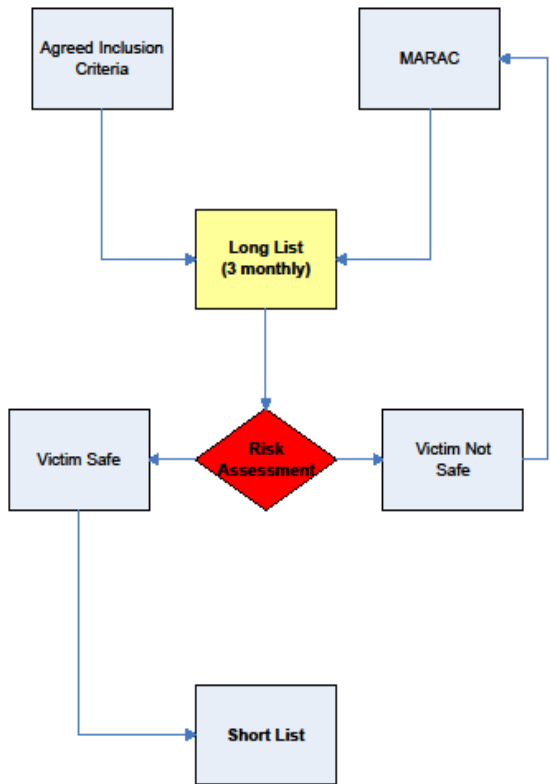
# The Plan

- Extensive consultation but never quite enough!
- Focused deterrence strategy to DA perpetrators
- 3 phases
- 2 or more cohorts in the RCT
- Very real concerns over risk
- A test of nerves

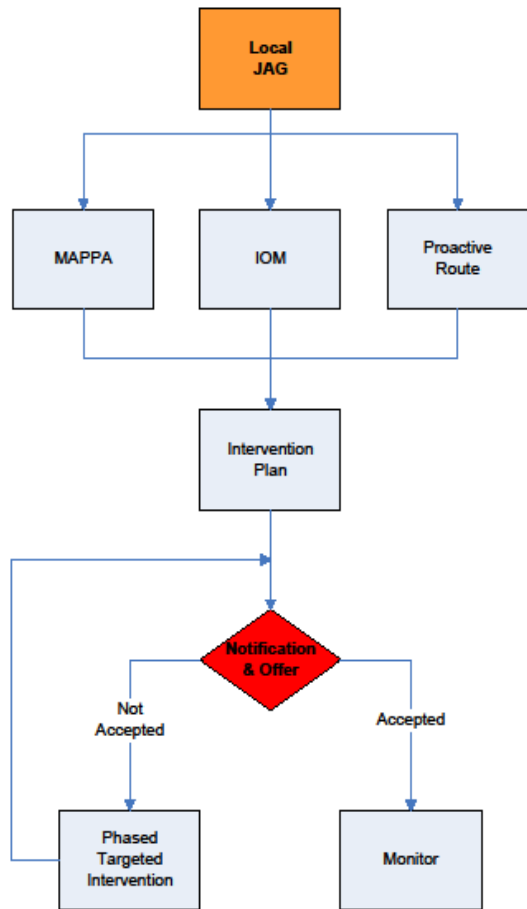


fighting crime  
protecting communities

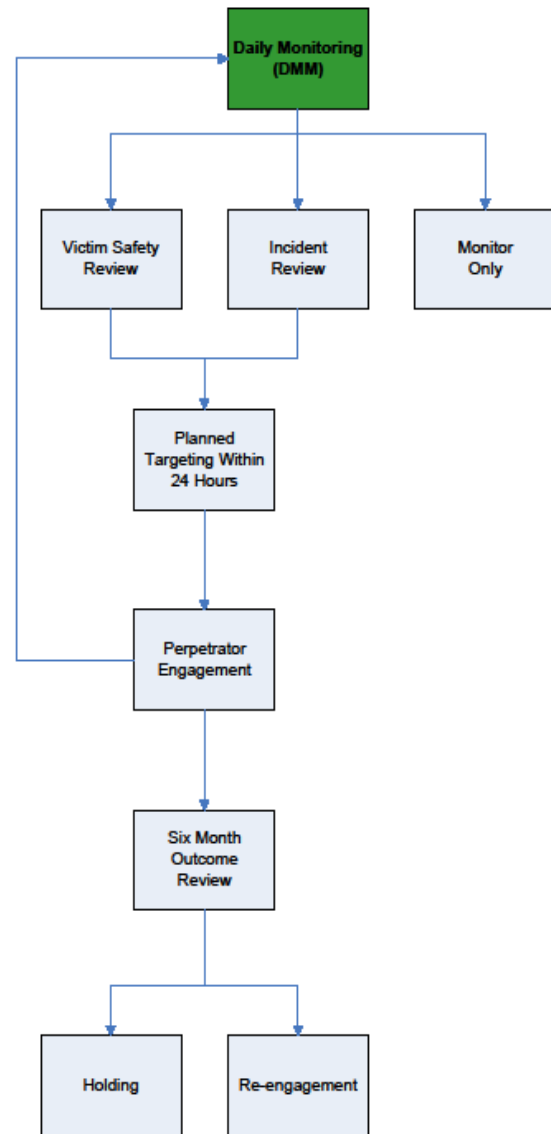
**Offender Identification**



**Pulling Levers**



**Delivery**





# The 'Dry Run'

- First attempt failed completely!
- 3 BCU's, 28 perpetrators
- 2 removed during pilot due to increased victim risk
- Only 1 case of known reoffending (breach restraining order) in remaining intimate relationship cohort
- Positive innovation, lessons learned, some promise
- But.....



fighting crime  
protecting communities

# The Learning

- Real issues with officer engagement – cultures need changing
- Capacity issues
- Ownership
- Selection bias
- Clear need for a corporate process – too much wiggle room given
- Needed broader command engagement
- Consistency needed in targeting plans



fighting crime  
protecting communities

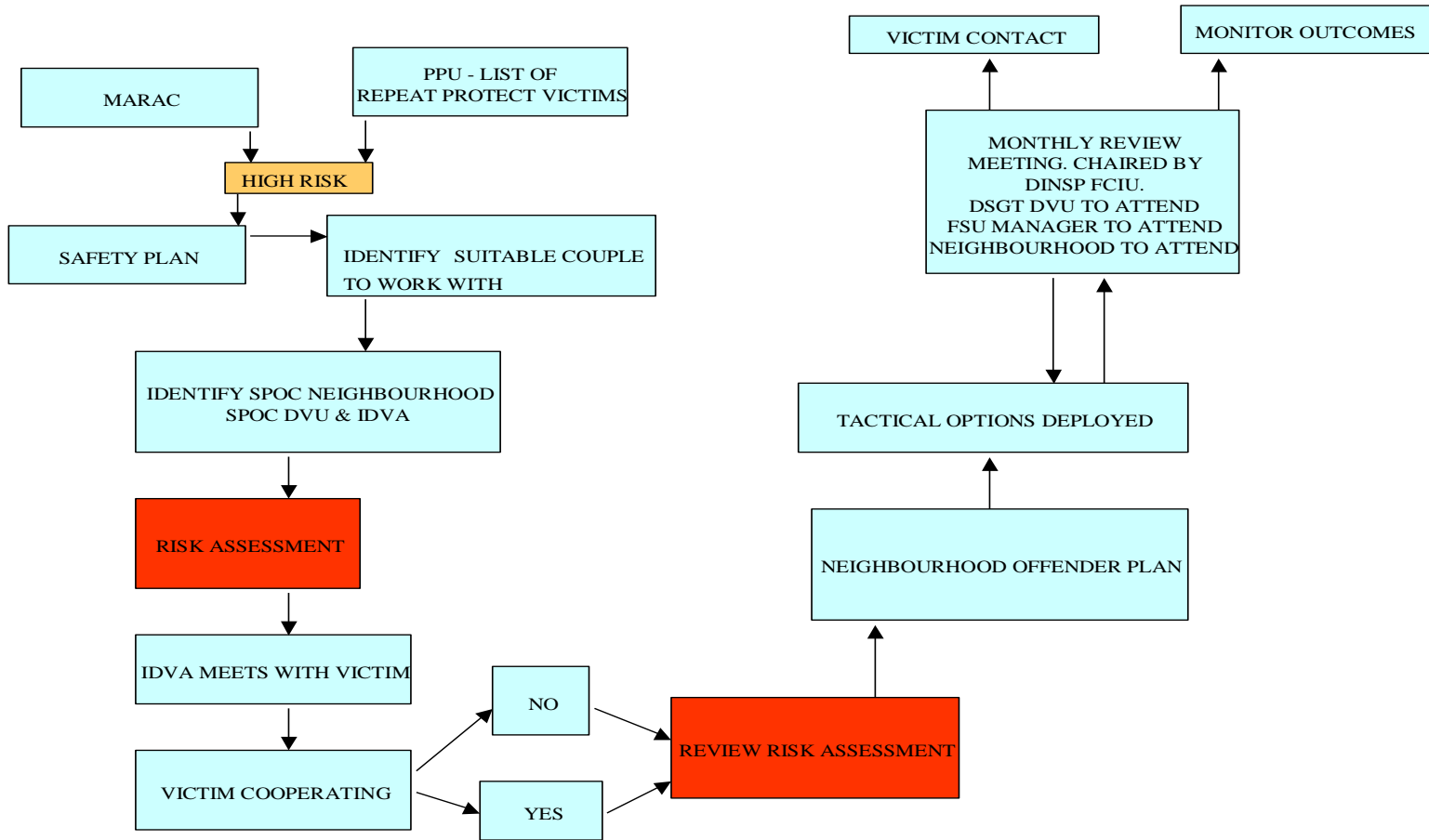
# The Critical Bits

- Standard risk assessment, oversight & management (DMM)
- Scripted mandatory notification
- Local panels
- IOM weighting & scoring enhancement
- Rapidity of interventions
- Dosage – phased targeted interventions
- Capability building
- Buy-in!



fighting crime  
protecting communities

# Risk Management



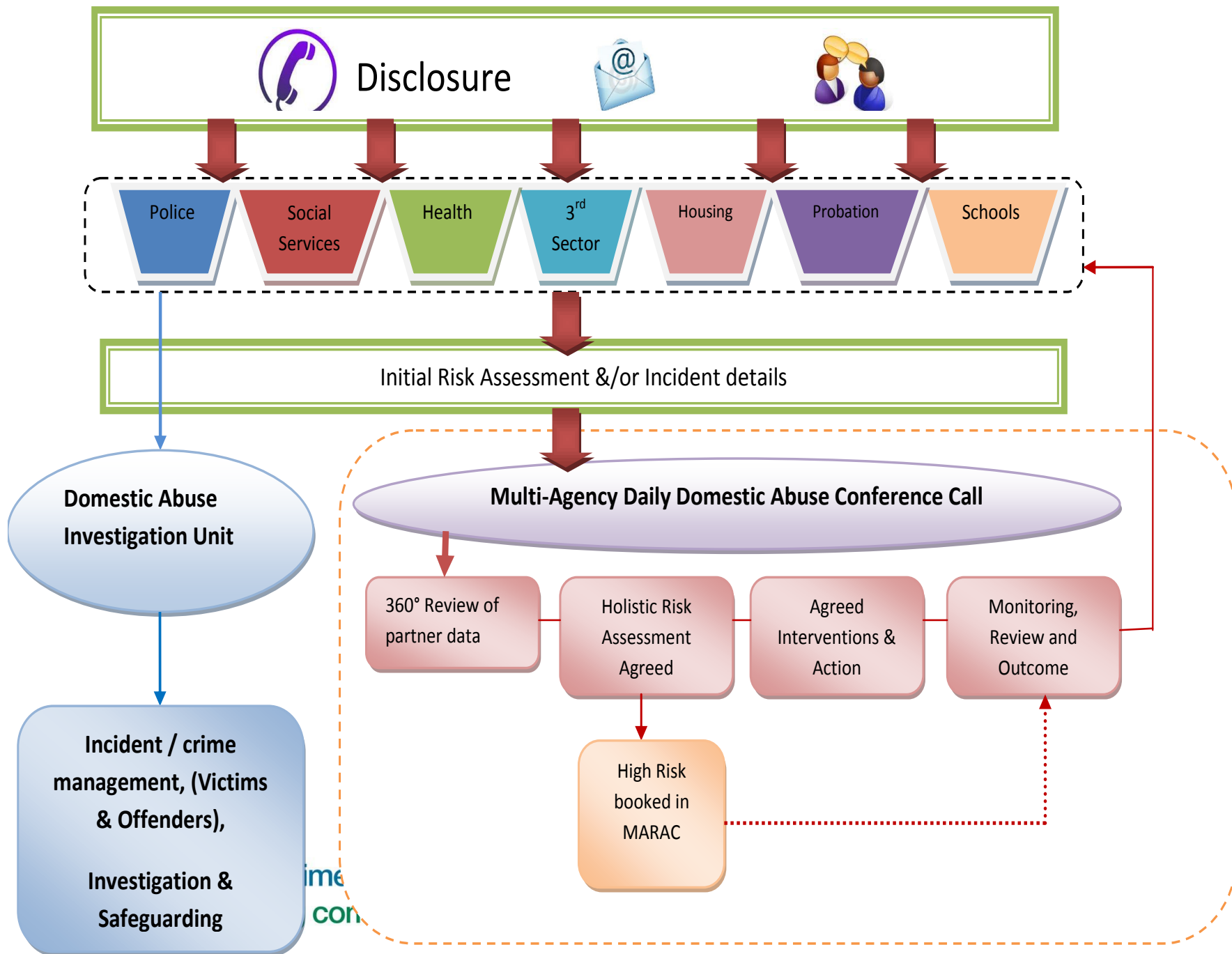
fighting crime  
protecting communities

# Risk Management

- DV Safety Plan
- Dedicated IDVA
- DV LOI marker, PNC, Niche flag 'notify if'
- Weekly victim review
- MARAC review
- Other agency flags
- CORVUS management site, briefing tool
- DMM review daily



fighting crime  
protecting communities



Disclosure



Police

Social Services

Health

3<sup>rd</sup> Sector

Housing

Probation

Schools

Initial Risk Assessment &/or Incident details

Domestic Abuse Investigation Unit

Multi-Agency Daily Domestic Abuse Conference Call

360° Review of partner data

Holistic Risk Assessment Agreed

Agreed Interventions & Action

Monitoring, Review and Outcome

High Risk booked in MARAC

Incident / crime management, (Victims & Offenders), Investigation & Safeguarding

# Outcome Measures

- Decrease in reported offending rate based on offending rate 12-months prior to engagement, during participation and following exit
- Decrease in severity of offending based on weighted scoring system
- Decrease in reported DA incidents, referrals, callouts
- Decrease in victim-perceived risk



fighting crime  
protecting communities

# Questions?



fighting crime  
protecting communities